

What's on in July and August

July				
Tue	3 rd	7.00	Film Show: <i>Potiche</i> (Trophy wife) – in French with subtitles. Contact Christianne on 07794 051355	Village hall, £4 on the door
Sat	7 th	7.00	Heritage exhibition: talk by Graeme Renton, architect, on church repairs. www.stpaulsheritage.org	St Paul's Church, free
Thu	12 th	11.00 and 1.00	Donington le Heath manor, Friends of Charnwood Forest tour of house/gardens. Email events@focf.org.uk	£5, members only
Sat	14 th	9.30/2.00	Heritage exhibition: WWI and WWII, plus talk at 3pm	St Paul's Church, free
Sat-Sun	14 th -15 th	10.00-4.00	Ulverscroft Camera Club exhibition – over 60 photos, plus chance to vote for village favourite	Village hall, free
Wed	18 th	10.00	WI annual outing: to Hambleton Bakery and Rutland Water	Village hall, members only
Sat	21 st	9.30/2.00	Heritage exhibition: St Paul's school, plus talk at 11am and 3pm	St Paul's Church, free
Mon-Tue	23 rd -31 st		Weekday holiday activities for children 7–14. Contact 0116 305 3110	Beaumanor Hall, £35
Sun	29 th	10.30	Celebration and Thanksgiving service for restoration of parish church	St Paul's Church, free
August				
Fri	3 rd	10.30-4.00	Fun, food and fellowship for senior members. Crafts/local history/singing. Call Anne on (01509) 890 830	Methodist Church, free
Sat	4 th	9.30/2.00	Heritage exhibition: celebrating needlework	St Paul's Church, free
Mon-Wed	6 th -29 th		Weekday holiday activities for children aged 7–14. Contact 0116 305 3110	Beaumanor Hall, £35
Sun	12 th	7.00	Open-air theatre – Sherlock Holmes. www.beaumanorhall.co.uk/events/ Gates open at 6. BYO rugs/seating	Beaumanor Hall, £17.60 ad., £11 child
Wed	15 th	7.30	'Joy of flowers', talk by Sandra Meakin for the WI	Village hall, visitors £4
Sat	18 th	9.30/2.00	Heritage exhibition: the village clock, plus talk at 11am/3pm	St Paul's Church, free
Sat	25 th	9.30/2.00	Heritage exhibition: the whole story, plus kids' cartoons at 3pm	St Paul's Church, free

Check for more local event details on these websites:

www.woodhouse-eaves.co.uk/

www.woodhouseparishcouncil.org.uk/local-events.html



July / August 2018 Roundabout

Woodhouse and Woodhouse Eaves

Roundabout is delivered free to every address in the parish

Jill Taylor and Tim Sault – Parish Council representatives

The Parish Council is officially responsible for leading the neighbourhood plan and is in the process of forming a steering committee. Parish Council representatives Jill Taylor and Tim Sault will report back on the progress and activities of the steering committee to the Parish Council. See: www.gov.uk/guidance/neighbourhood-planning--2#who-leads-neighbourhood-planning-in-an-area

4. Establishment of the neighbourhood plan steering committee

The steering committee is a community group charged with involving the whole community of residents, businesses and other stakeholders in the neighbourhood planning process. A small group of people has volunteered to be part of the steering committee. Further participation either by joining the committee or acting within the community is welcomed and encouraged. Please note that any commitment doesn't have to be for the full duration of the project. Involvement is anticipated from different groups at different stages and all contributions will be appreciated.

5. Details of the next meeting

Village hall, Tuesday, 10th July, 7.00–8.30pm. An agenda will be circulated nearer the time. Everybody is welcome.

Merrin Jensen



deVOL Kitchens

deVOL are designers and makers of handmade English kitchen cupboards and other beautiful, simple things for your home.

We are very happy to welcome you to Cotes Mill, a rare and surprising showroom and design studio which dates back over 1000 years and is set in 12 acres of beautiful surroundings on the River Soar in Leicestershire.

We have created four floors of wonderful showrooms with all our handmade kitchen ranges on display, intermingled with an eclectic mix of gifts, vintage furniture, our very own deVOL ceramic and metalware collections, and other unusual things for your home and garden.

www.devolkitchens.co.uk • Tel. 01509 261000
Cotes Mill, Nottingham Road, Cotes, Loughborough, LE12 5TL • Opening Times:
Mon - Fri: 09.30 - 17.00, Saturday: 10.00 - 17.00

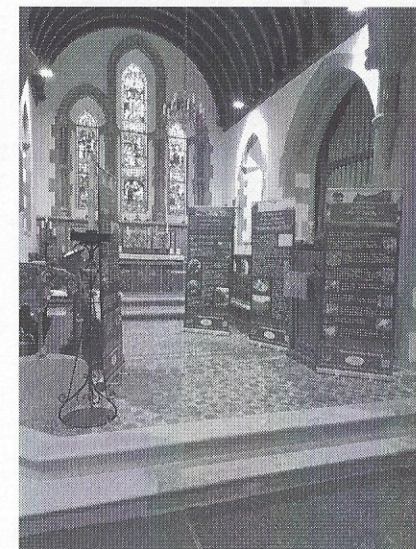
Woodhouse Eaves Heritage Exhibition opens

A free summer exhibition full of fascinating information about the history and natural history of Woodhouse Eaves and its surroundings has opened at St Paul's Church. Most of the research has been carried out by volunteers under the leadership of Sue Young, and can also be seen on the St Paul's Heritage website (www.stpaulsheritage.org).

Opening weekend

The exhibition opened on the weekend of the 2nd and 3rd June, to coincide with the open gardens. One hundred visitors came to see the exhibition on the Saturday and a further 75 on the Sunday and, to judge by the number of tiddlywinks put into the smiley-faced feedback jar, visitors really enjoyed their experience.

The visitors were impressed by the amount of research that had gone into the projects on display over the weekend. A total of 24 projects have been carried out for the exhibition, broadly divided into five main categories: features of the church building and the architects who designed it; local families and people; the natural history surrounding the church; the graveyards and memorials; and the history of St Paul's School.



Display banners in the chancel.

Artefacts linked to the restoration project were also on show, such as the original architect's plans, and facsimiles of documents related to the founding of St Paul's School. For those interested in learning more about the structure and decorative features of the building, there were quizzes for both adults and children, with prizes and certificates on offer.

The exhibits over which visitors lingered the longest were the copies of 19th century maps of the village. Residents had great fun trying to locate their properties or the sites on which they would eventually be built. Some very interesting insights came out of this; for example, have you ever wondered why many people pronounce Maplewell as 'Mapplewell'? Studying the old maps revealed that originally that was how it was spelled.



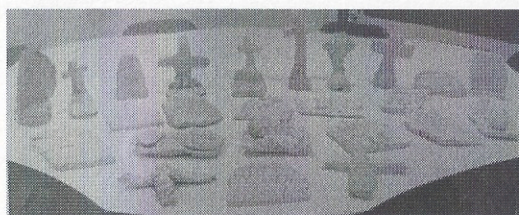
Replicas of St Paul's Church chalices made by school pupils.

St Paul's CE Primary School

Visitors were also very impressed and moved by the creative artwork produced just a few weeks ago on Heritage Challenge Day by pupils of St Paul's. The children had obviously put a lot of thought and effort into highlighting the aspects of the heritage that appealed most to them.

One piece of artwork, produced by Year 3, struck visitors as being particularly poignant. Inspired by the centenary of World War One, the children had researched the 34 local

soldiers listed on the village war memorial and found that only three of them are buried in St Paul's churchyard. Their poster shows a photograph of 31 crosses and stones, with the explanation: 'To commemorate those who didn't make it home, we created our own gravestones and memorials to remember those not buried in St Paul's graveyard.'



Gravestones and memorials created by children at St Paul's School.

Bat walk

To tie in with the Woodhouse Eaves Bioblitz 2, a bat walk was held at the church late on the evening of 8th June. A talk by an expert on bats complemented the research project of Maggie Morland, fittingly entitled 'Bats in the Belfry?'. The talk was followed by an exploratory expedition outside, where – thrillingly – the bat detector picked up the calls of various bats. Recordings of bat calls from previous forays with the bat detector could be heard on an iPad in the exhibition; what a privilege it was to hear sounds that the human ear can't normally detect!

Memories prompted

The exhibits and research projects prompted many memories to surface, and visitors were encouraged to write down their memories, either there and then or later at home. Although the research projects are now finished, such a heritage archive is never complete. It is hoped that a visit to the exhibition will mean that more precious memories are recorded for posterity, to the benefit of the whole community.

Dawn Daly, St Paul's Heritage Project volunteer

Woodhouse Eaves plastic-free report

Recent local activity

Continuing our journey to reduce the use of unnecessary and single-use plastics in the village, this month a group of local people shared their ideas and activities at a stall for the open gardens weekend. Information was on offer, including plastic-free gardening tips, local suppliers of plastic-free goods, local milk delivery firms, Friends of the Earth advice, and Big Recycling guides from Charnwood.

There was also an opportunity to see the swaps that local people have already made, for example, bars of soap instead of liquid in bottles; re-usable water bottles instead of disposable bottles; metal razors instead of throwaway ones. A rubbish-sorting game encouraged visitors to choose the appropriate bin: green recycling or the black bin. It wasn't always easy, but prizes were won! A local young man joined us to sell his homemade salves in metal tins. These were made using beeswax, olive oil and essential oils. Sedums were also on sale in pots made from recycled materials.

The stall had a steady stream of interested folk. All were willing to share their views and strategies to reduce their plastic waste and were keen to hear what others had to say. There was a really positive attitude towards working together to solve what often seems an overwhelming problem. We had a pledge tree, to which people were encouraged to contribute.

These were some of the pledges:

1. Put things in the right bin.
2. No more plastic straws.
3. Use glass storage jars for leftovers.
4. Get a re-usable water bottle.
5. Use soap powder in a paper box.
6. Avoid pre-packed fruit, vegetables and meat.
7. Ditch the coffee pods and remember to carry your own coffee cup.
8. Use tea leaves not bags.
9. Re-use plastics (not all plastics are 'poison', for example, some, such as syringes, are useful for medical reasons).

One of many discussions people had at the stall was about Ecobricks, a novel way of turning unrecyclable plastics into building blocks (more information is at www.ecobricks.org). Also discussed was a new package-free shop that will open at 22 St Martin's, Leicester in July. On display at the stall was the new bin for recycling plastic bottle caps. This is now available